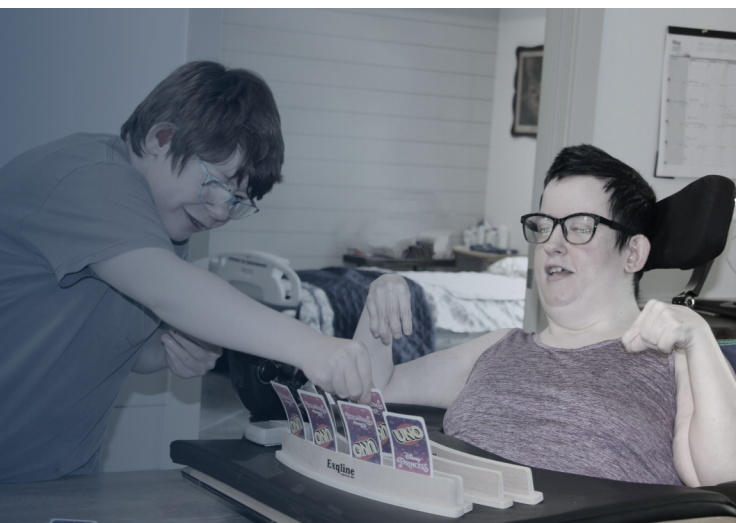


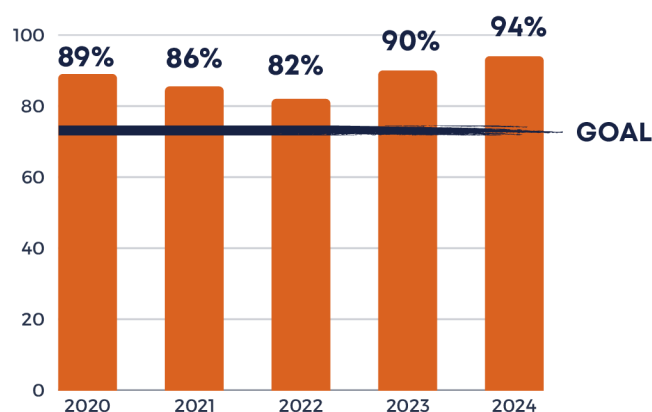
HELPING PEOPLE WITH DEVELOPMENTAL DISABILITIES TO LIVE INDEPENDENTLY IN THE COMMUNITY



- **27 total residences**
- 10 one-resident homes
- 13 two-resident homes
- 4 three-resident homes

50

INDIVIDUALS SUPPORTED
IN COMMUNITY LIVING



Maximize Community Participation -
Percentage of goals accomplished related ISP
objectives. *Goal of 75% surpassed!*

✓99%

Individual/Participant
Satisfaction Rating

✓98%

Parent/Guardian
Satisfaction Rating

✓99.96%

Successful Medication
Pass Rate